

Hancock Associates was established in 1978. We maintain our position as an industry leader through investment in exceptional staff, state-of-the-art technology and acquisition of historical survey records. We value long-term relationships with our clients and look forward to serving you.

## HISTORICAL SURVEY RECORDS

Hancock Survey Associates, Inc. (1978-present)  
Acton Survey & Engineering (1967-present)  
Andrysick Land Surveying (1989-present)  
Thomas A. Appleton (1897-1963)  
Atlas Land Surveying (1980s)  
W.H. and H.W. Brainerd (1900-1920s)  
Carters & Towers Engineering Co. (1956-1997)  
John Casey (1940s-1970s)  
Nathaniel Clapp (1930s-1940s)  
Clipper City Surveying, Engineering & Mapping (1999-2004)  
Coastal Survey (1991-2003)  
A.J. "Bud" Crawford (1947-1961)  
Raymond A. D'Arcy (1945-1966)  
Decesare & Lang (1961-1979)  
DGT Survey Group North Shore LLC (2011-2017)  
Charles Dingman (1930s-1950s)  
R.O. and G.F. Dingman (1940s-1950s)  
Kenneth Hayward (1965-1973)  
Land Surveys, Inc. (1973-2020)  
Gerald R. Marsella (1977-2014)  
James Monahan (1943-1985)  
Charles Morse, formerly Morse & Martin (1924-1970)  
Noonan & McDowell (1986-present)  
Oak Engineers (2000-2010)  
Oculus (2008-2011)  
Pembroke Land Survey Company (1959-2005)  
Polaris Engineering (2004-2008)  
Port Engineering (1971-2008)  
Charles A. Putnam (1852-1899)  
Kenneth W. Richardson (1944-1973)  
Guy W. Ricker (1902-1911)  
Kenneth Sherman (1950s-1990s)  
Sherman & Frydryk (2005-present)  
Sherman & Woods (1990s-2005)  
Siegrist Land Surveying (1996-2005)  
Richard Stowe (1950s-1970s)  
Arthur Sullivan (1950s-1980s)  
Tilton & Chase (1930-1950)  
Towers Engineering Co. (1944-1956)

## AFFILIATIONS

American Society of Civil Engineers (ASCE)  
American Congress on Surveying & Mapping (ACSM)  
Boston Society of Civil Engineers  
Institute of Transportation Engineers  
Massachusetts Association of Land Surveyors and Civil Engineers (MALSE)  
New Hampshire Land Surveyors Association (NHLSA)  
Association of Massachusetts Wetland Scientists (AMWS)  
Connecticut Association of Land Surveyors (CALS)  
Rhode Island Society of Professional Land Surveyors (RISPLS)  
New England Land Title Association (NELTA)

## Corporate Headquarters

185 Centre Street, Danvers, MA 01923  
978-777-3050, 800-998-3050, F 978-774-7816

## Regional Offices

34 Chelmsford Street, 2nd Floor, Chelmsford, MA 01824  
978-244-0110, F 978-244-1133

315 Elm Street, Marlborough, MA 01752  
508-460-1111, F 508-460-1121

1 Harris Street, Unit 3, Newburyport, MA 01950  
978-465-9992, F 978-255-1249

10 Ferry Street, Suite 406, Concord, NH 03301  
603-223-1950

33 Dover Street, Brockton, MA 02301  
508-588-1877

## Divisions of Hancock

### Andrysick Land Surveying

206 Worcester Road, Princeton, MA 01541  
978-464-5890, F 978-464-5383

### H.W. Moore Associates

121 E. Berkeley Street, 4th Floor, Boston, MA 02118  
617-357-8145, F 617-357-9495

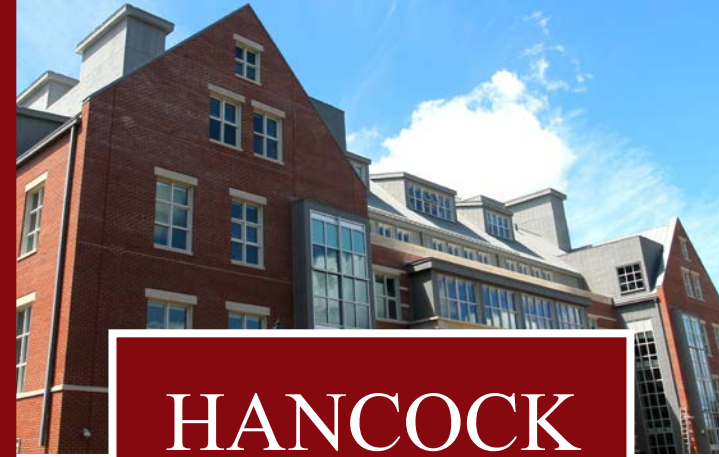
### Noonan & McDowell

34 Chelmsford Street, 2nd Floor, Chelmsford, MA 01824  
978-667-9736, F 978-671-9565

### Sherman & Frydryk

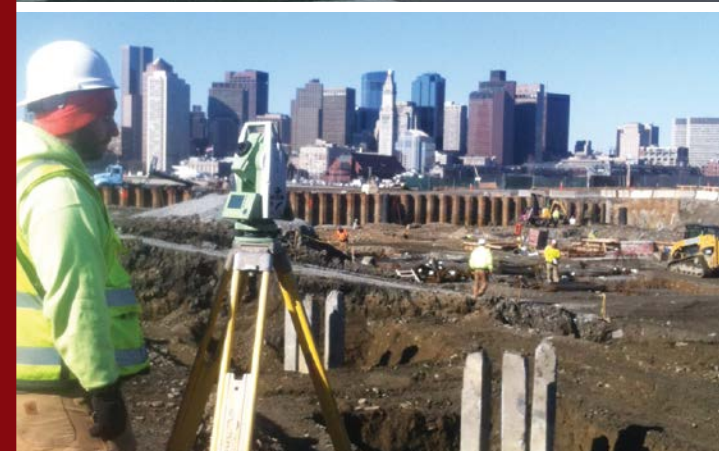
3 Converse Street, Suite 203, Palmer, MA 01069  
413-283-6210, F 413-289-1025

info@HancockAssociates.com  
www.HancockAssociates.com



# HANCOCK ASSOCIATES

Surveyors | Engineers | Scientists



Providing expert land surveying, civil engineering and wetland science services throughout MA, NH, CT and RI.



## LAND SURVEYING

Our surveyors are licensed professionals with extensive experience. Hancock invests in continuing education, the latest equipment, computers and software so we're well-equipped to handle your project accurately and efficiently.

- Activity and Use Limitation (AUL) Plans
- Aerial Photogrammetric Control
- ALTA Title Insurance Surveys
- As-Built Surveys
- Boundary Surveys
- Condominium Plans
- Construction Management Support
- Construction Staking
- Easements
- Existing Conditions Surveys
- Expert Testimony
- FEMA Elevation Certificates
- FEMA Letter of Map Amendment (LOMA)
- GPS Services
- Hydrographic Surveys
- Land Court Surveys
- Lot Stakings
- Plot Plans
- Settlement and Deformation Monitoring
- Soundings
- Subdivisions
- Title Issues
- Topographic Surveys
- Wetland Surveys
- Zoning Analysis



## CIVIL ENGINEERING

Our engineers have a unique body of expertise. They are well-respected by regulatory boards and commissions for our thorough and straightforward style and by clients for our guidance and innovative solutions.

- Land Planning and Due Diligence Site Investigations
- Commercial/Mixed-Use Site Design
- Urban High Density Multi-Family Project Design
- Residential Subdivision Design and Permitting
- Regulatory Permitting Coordination
- Construction Document Preparation and Construction Administration
- ADA Site Analysis, Design and Compliance
- Expert Testimony
- Flood Studies and FEMA Map Revisions
- Sanitary Sewer Design and Sewerage Lift Station Design
- Stormwater Management System Analysis, Design and Post-Construction Monitoring
- Stormwater Pollution Prevention Plan (SWPPP) Preparation and Inspection
- Subsurface Sewage Disposal System Testing and Design
- Constant Head Infiltration Testing
- Hydrant Flow Testing
- Value Engineering



## WETLAND SCIENCE

Our scientists thoroughly examine each site to determine how wetlands are formed, how they work, how to best protect them and in some instances, make new ones.

- Abbreviated Notice of Resource Area Delineation (ANRAD)
- Certificate of Compliance (COC)
- Chapter 91 Waterways License
- Coastal Dune Restoration
- Coastal Environmental Permitting
- Corps of Engineers Section 404 Permits
- Due Diligence Site Investigations
- Eel Grass Surveys
- Environmental Compliance Monitoring/Construction Monitoring
- Expert Testimony
- MEPA Environmental Impact Reports
- MESA Conservation and Management Permits
- Notice of Intent (NOI)
- NPDES Permits
- Permitting Support
- Project Review for Conservation Commissions
- Rare and Endangered Species Assessments
- Seawall, Float and Pier Permitting Assistance
- Section 401 Water Quality Certification
- Shorebird Monitoring
- Soil Erosion/Sediment Control Design
- Soil Evaluations
- Stormwater Pollution Prevention Plans
- Vegetation and Wildlife Surveys
- Vernal Pool Identification/Certification
- Wetland Construction Observation
- Wetland Functions and Values Assessments
- Wetland Resource Delineation and Mapping
- Wetland Restoration, Replication and Enhancement
- Wildlife Habitat and Fisheries Evaluations